

SPRING 2025



hedgerow

MAGAZINE

CONNECTING RURAL COMMUNITIES

BUSINESS | WELLBEING | COMMUNITY | ENVIRONMENT



LOCAL, INDEPENDENT GARAGE FOR ALL YOUR VEHICLE NEEDS

LMC
Auto Services



Car and motorcycle
MOT test station

Computer Diagnostics

MOT Repairs

Tyres

Tuning

Mechanical Repairs

Servicing

Welding

Exhausts

*5% donation goes to The Mary How Trust

MOT
Special offer

£40

if booked online

SAVE
26%

Usual price £54.85*

All makes
and all models
undertaken

FREE collection
& delivery

Checkatrade.com



blackcircles.com
the new way to new tyres



the Good Garage Scheme

LMC Auto Services

Unit 7&8 | Station Approach Industrial Estate
Pulborough | West Sussex | RH20 1AQ



01798 873281

lmcautoservices.co.uk

LMC
AUTO SERVICES



THE HISTORY OF HEDGEROW MAGAZINE



I first started the Pulborough Parish Council News back in 2009 and although this local publication has gone through a number of changes and names, including Community Bulletins and RH Magazine, it has at its heart the local community and local businesses.

In 2019 I set up The Greenhouse at Stane Street, a refill and essentials shop based in Pulborough to fulfil my passion of helping the environment.

Both magazine and shop share a similar ethos of caring about the environment, promoting your wellbeing, being proactive in the community and championing local businesses and therefore in 2025 it felt right for them to join forces to create Hedgerow Magazine.

And why Hedgerow? In essence our countryside hedgerows connect local communities which is what effectively this magazine does.

Kerry, The Greenhouse at Stane Street
thegreenhouse.shop

Please seek out the services of those businesses who support Hedgerow Magazine. Their advert location is included on the Hedgerow map.

PULBOROUGH
LMC Auto Services (p2)
So India (p4)
Miss Mop (p5)
JNJ Storage (p6)
W. Bryder and Sons (p10)
Willmers (p11)
The Greenhouse (p16)

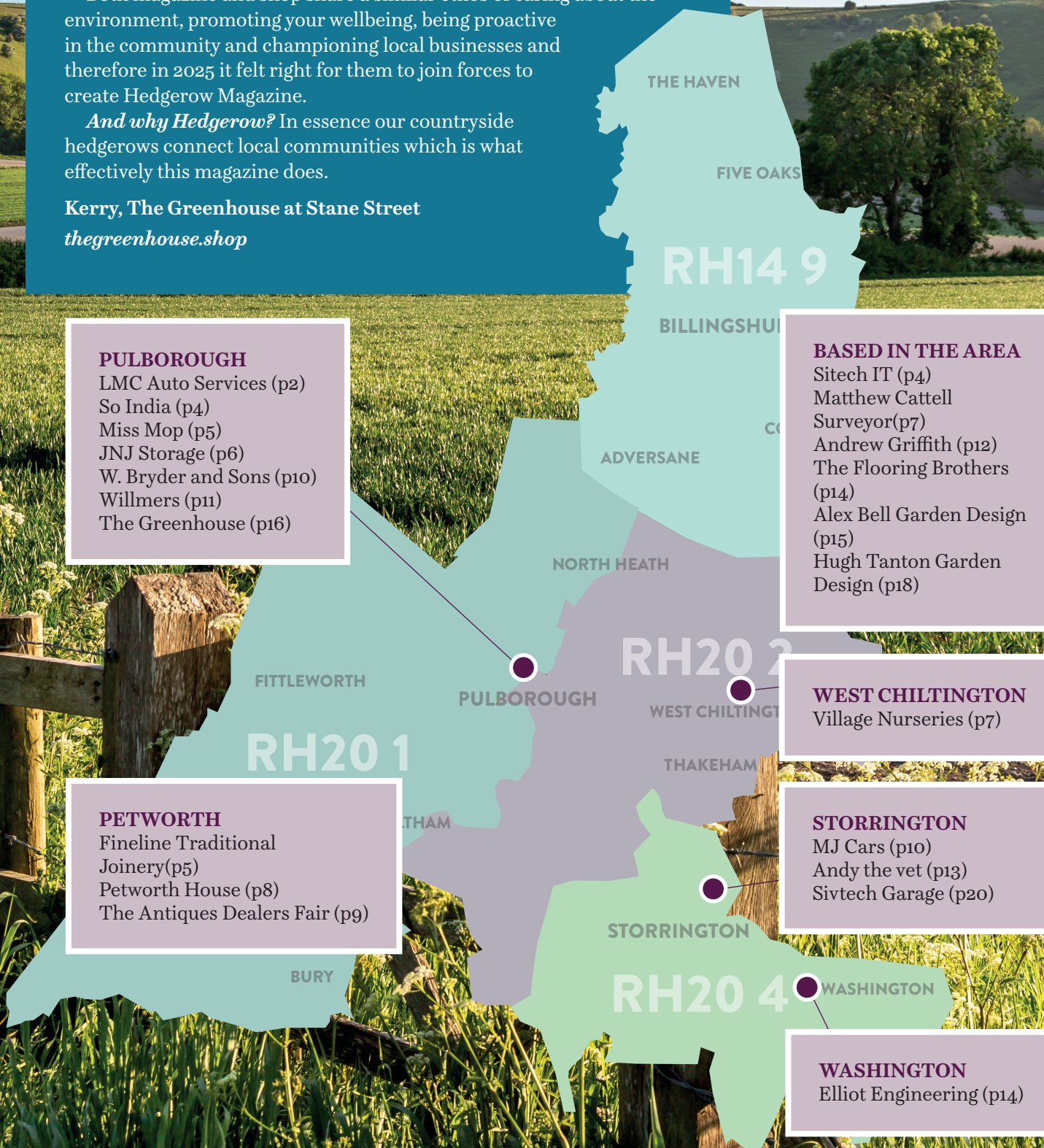
BASED IN THE AREA
Sitech IT (p4)
Matthew Cattell
Surveyor(p7)
Andrew Griffith (p12)
The Flooring Brothers (p14)
Alex Bell Garden Design (p15)
Hugh Tanton Garden Design (p18)

PETWORTH
Fineline Traditional
Joinery(p5)
Petworth House (p8)
The Antiques Dealers Fair (p9)

WEST CHILTINGTON
Village Nurseries (p7)

STORRINGTON
MJ Cars (p10)
Andy the vet (p13)
Sivtech Garage (p20)

WASHINGTON
Elliot Engineering (p14)





Start afresh in spring



Spring is the perfect time to pick up a new skill or craft. We are so fortunate to have a number of talented craftspeople in the area who not only make their own items but often teach and run courses either at their studios or in local venues.

Crafting can be good for our mental health and has been shown to alleviate symptoms of anxiety, depression, loneliness and dementia.

It gives the opportunity to be completely mindful, absorbed in one particular activity whilst in the company of others. Many craft activities have a meditative quality due to their repetition and keeps us in the present moment, leaving worries of past and future issues behind.

Many course providers run a taster session or a half day to see if it is something you would like to pursue before committing to purchasing specialist equipment.

Local providers include.
Stitch Storrington: stitchat21.com
Handprinted: handprinted.co.uk
Esther Collins: esthercollins.co.uk
Salty Dog Pottery Studio: saltydogpotterystudio.co.uk
The Sussex Yarn: sussexyarn.co.uk

sitec it

Computer support
Solving IT problems since 2004

- Business & Home Support Services
- Desktop and Laptop Repairs
- PCs & Mac Sales and Advice
- PC Tuneup and Upgrades
- Virus Protection
- Networking
- Broadband
- Data backup and recovery

01483 806060 sitecit.co.uk

So India
Exclusive Indian Cuisine

**Open 6 days a week 5pm-10pm
including Bank Holidays
Dine in and takeaway**

Stane Street, Codmore Hill, Pulborough RH20 1BG
www.soindia.co.uk
01798 873318

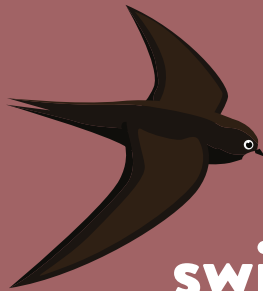


The swifts + swallows return



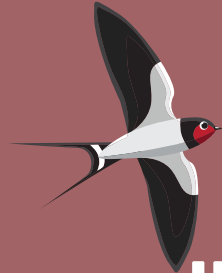
It won't be long before the swallows, swifts and martins return to our villages but how do we tell them apart? The RSPB has a useful guide to help with identifying the difference: www.rspb.org.uk/birds-and-wildlife/identifying-birds/swift-swallow-or-martin-a-handly-id-guide and below is a start point.

Dark brown all over, with a small pale patch on its throat. Long curved wings. Tend to be spotted in groups and have a high pitched scream of a call.



swift

Glossy dark blue-black above and creamy white below. A dark red forehead and throat. Long deep forked tail. Often seen perching on wires and have a chattering call.



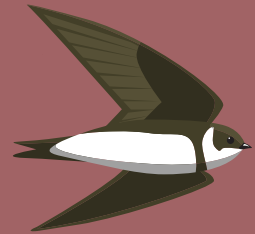
swallow

Glossy black above and completely white below with a white rump and short forked tail. They build mud cup nests between eaves of houses.



house martin

Brown above and white below with a brown band across its breast and a short forked tail. Nest in colonies in burrows usually into sandy banks.



sand martin

Treat yourself to a Spring Clean

Taking bookings for one-off cleans From £20 per hour (minimum 2 hours) Fully insured

01798 874355

www.missmop.net

fineline
TRADITIONAL JOINERY LTD

Bespoke Joinery

An established company specialising in high quality, purpose made bespoke joinery.

We manufacture windows, staircases, doors, conservatories, kitchens and joinery for property renovations, new builds and barn conversions.

All our products are made to your requirements; from design, using a CAD drawing system, through to a professional factory spray finish.

Contact us to discuss and provide a quotation for any joinery project you may have coming up.

01798 422530

E: enquiries@fineline-joinery.co.uk

Would you like to be part of the next

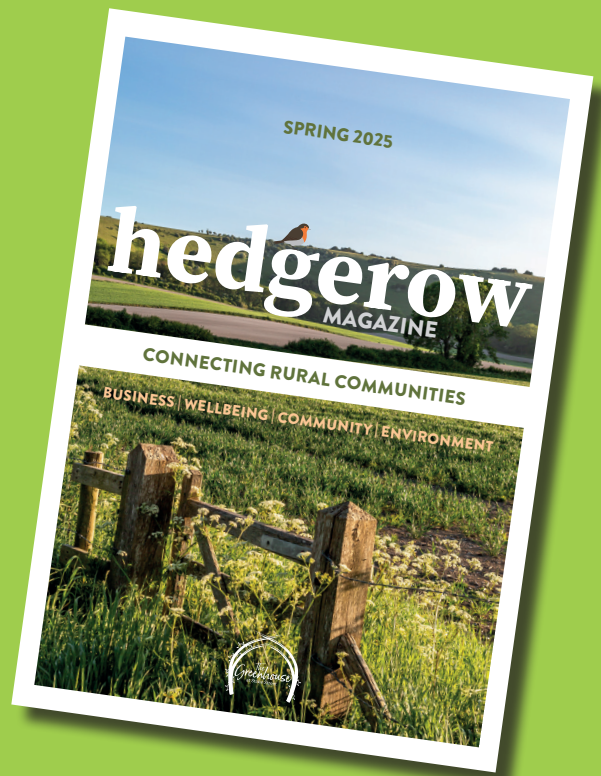
hedgerow

MAGAZINE

WHY HEDGEROW MAGAZINE?

- 3 sizes of advert to choose from at competitive rates and link benefits with The Greenhouse at Stane Street
- Huge audience reach of over 14,500 homes and businesses in the RH14 and RH20 postcode areas
- Over 15 years experience of producing local publications
- Spread the cost of multiple issues across the year as a monthly direct debit

Get in touch to request a media pack
advertising@hedgerowmagazine.co.uk



KEY DATES 2025

Summer

BOOK BY
9 May 2025

DISTRIBUTION
STARTS
2 June 2025

Autumn

BOOK BY
8 August 2025

DISTRIBUTION
STARTS
1 September 2025

Winter

BOOK BY
7 November 2025

DISTRIBUTION
STARTS
1 December 2025



Hedgerow Magazine is produced four times a year by The Greenhouse at Stane Street, Stane Street Nurseries, Stane Street, Pulborough RH20 1BQ
TELEPHONE: 07973 828231 **EMAIL:** advertising@hedgerowmagazine.co.uk



Hedgerow Magazine is printed from certified sustainable sources using plant-based inks.

Every care has been taken to ensure the accuracy of content and information is correct at time of going to press. Hedgerow Magazine cannot be held responsible for any errors or omissions or endorse companies, products or services that appear in this publication.



Charitable organisations



SAVING LIVES WHEN EVERY SECOND COUNTS

Air Ambulance Charity Kent Surrey Sussex (KSS) is a team of skilled, sector-leading experts responding to over 3,300 incidents annually across Kent, Surrey, and Sussex, they can reach any location within 30 minutes.

Their helicopters are flying emergency rooms, whether it's on the road, beach, or park and they can get there, fast, bringing specialised doctors, paramedics and treatment to those who need it most. From open heart surgery to emergency anaesthesia. They don't stop. 24/7, 365 days a year.

Key figures (at time of going to print)

£20.4m annual running cost

7,390km² area covered

88% raised from donations and fundraising



**AIR AMBULANCE CHARITY
KENT SURREY SUSSEX**

How you can help

There are all number of ways you can support this vital charity from fundraising to taking part in one of their charity events. From raising awareness by booking a talk to volunteering for a variety of support roles.

Visit aakss.org.uk for details



MATTHEW CATTELL
CHARTERED SURVEYOR

- Residential property surveyor covering Storrington and Pulborough areas
- Level 2 – Home Condition Reports
- Level 3 – Building Surveys
- Excellent local knowledge
- Over 25 years' experience in the property industry
- High quality reports
- Regulated by RICS

Contact us today

01243 552620
07740 337893
ENQUIRIES@MATTHEWCATTELL.CO.UK
MATTHEWCATTELL.CO.UK

RICS
Regulated by RICS

RPSA
Residential Property Surveyors Association

The Property Ombudsman

QUALITY AND VALUE
DIRECT FROM THE
GROWER!

- You will find an exceptional range of Seasonal and Hardy plants here at our Nurseries in West Chiltington – all grown and sold on site!
- Choose from a wide range of loose Seed Potatoes £2.95 per kg – Available Now!
- Fantastic flowering Hellebores – only £9.75 each.

FREE VIOLA!
PRESENT THIS ADVERT
AND CLAIM A FREE
HARDY VIOLA

VILLAGE NURSERIES
SINNOCKS, WEST CHILTINGTON, RH20 2JX
01798 813040
OPEN 9AM - 4PM
7 DAYS A WEEK.

village-nurseries.co.uk
peter@villagenurseries.co.uk

Events in the local area

Experience Monteverdi's Magnificent Vespers at Boxgrove Priory

Saturday, 29th March 2025 at 7:30pm
Venue: Boxgrove Priory

The Chantry Quire, under the expert direction of Peter Allwood, performs Monteverdi's Vespers of 1610 in the stunning setting of Boxgrove Priory. This grand celebration marks 25 years of the Chantry Quire, honouring their legacy of exceptional choral music-making. Accompanied by the players of the Western Wyndes, led by Jeremy West on the Cornett.

Tickets are £20 available at www.chantryquire.org.uk

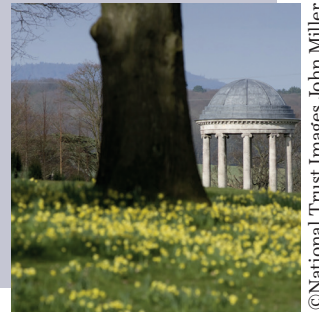
Start of Spring Festival at Petworth House

From 5-27 April the annual Spring Festival takes place at Petworth House, where they celebrate the arrival of a new season with spectacular bulb displays, talks, workshops, family activities and more.

From Saturday 5-Monday 21 April families can pick up a free 'Ben Plants a Butterfly Garden' trail map to follow the buggy-friendly paths of the Pleasure Garden and discover fun games and activities along the way.

Spring Festival events are free, however normal admission to Petworth House applies.

Visit nationaltrust.org.uk/petworth for all the details



©National Trust Images John Miller

MARCH

29

APRIL

5

8



SPRING FESTIVAL

5 - 27 April 2025
Petworth House and Park

Celebrate the arrival of a new season at our Spring Festival. With gardening talks, creative workshops, garden tours, a community art display, family trail and activities, there's something for everyone to enjoy.

Check our website for the full programme.

nationaltrust.org.uk/petworth

1ST CHOICE FOR SELF STORAGE IN WEST SUSSEX

Local self storage for home & business



JNJ STORAGE

01403 700840
info@jnjstorage.com
www.jnjstorage.com

JNJ Storage
Blackgate Lane,
Pulborough,
RH20 1DF



Wide choice of room sizes from 16 - 310 SQ FT



Modern secure rooms, with individual alarms



24hr CCTV monitoring and intruder alarms



No deposit required.
Storage from £10.20/week

The Petworth Proms

Back by popular demand, the National Trust in partnership with Petworth Festival presents three magical musical evenings in the historic grandeur of Petworth House on Thursday 15-Saturday 17 May at 7.30pm.

A sequence of mini-concerts will take place by talented young musicians – all final year students of the Royal Academy of Music – in four of the magnificent state rooms of the 17th century mansion. Tickets are £34 per person and booking is essential.

nationaltrust.org.uk/petworth
petworthfestival.org.uk



©National Trust Images Michael Cole

MAY

15

16

The Petworth Park Antiques & Fine Art Fair

marquee will be hosted in the grounds of Petworth House, for the 11th consecutive year, for three days from Friday 16 to Sunday 18 May 2025, when some 60 dealers will converge to exhibit an eclectic mix of antiques to contemporary art.

Within the marquee itself will be desirable items such as fine period furniture, clocks and vintage watches, oil and watercolour paintings, drawings and prints, maps, glass, sculpture, lighting, boxes, silver and jewellery together with ceramics, 20th century design objects, textiles and carpets, applied arts and many other decorative and unique works of art from the ancient to the contemporary.

Visit www.petworthparkfair.com for all the details.



Japanese Meiji period (1868-1912) Moriage cloisonne enamel vase with a rare moriage enamel net enclosing birds on the vase £3,500 from Jacksons Antique

THE PETWORTH PARK ANTIQUES & FINE ART FAIR

THE MARQUEE, PETWORTH PARK
PETWORTH, WEST SUSSEX GU28 0QY

16 - 18 MAY 2025

Friday 11.00 - 19.00
Saturday 10.30 - 18.00
Sunday 10.30 - 17.00

To request your complimentary invitation for three, including free entry to Petworth House during the fair, please email HR@adfl.co.uk



01797 252030
www.petworthparkfair.com



FILM NIGHT

At Sullington Parish Hall
Wednesday 12th March 2025



Performance commences at 7.30pm

There will be an interval and Bar & Raffle.

Tickets £5 from 'The Card Shop' in Storrington.

Unsold tickets will be available for purchase on the door on the night.

For further details please contact

Ken Collins on 01903 740745

Rotary Club Members can provide transport to the Film Night for local residents who are unable to make their own arrangements. Anyone needing transport should contact John Ollerton on 07523322554

Storrington & Pulborough District Rotary Club

All proceeds go to charitable causes supported by Rotary. Registered Charity No.1029115



Future of: local government



Sussex has moved a step nearer to major restructuring with the government's agreement to make the area a priority for devolution.

Following an expression of interest from the leaders of West Sussex County Council, Brighton & Hove City Council, and East Sussex County Council, ministers have approved proposals to create a mayoral strategic authority for Sussex, made up of an elected mayor and two members of each constituent authority, with strategic powers for transport, public safety, health, environment and climate change, housing, economic growth, skills and jobs.

The government will now begin a consultation to seek the views of people and organisations in Sussex.

This process follows the Government's White Paper on English Devolution published in December which outlined its aim to bring more decision-making down from Westminster to local communities.

Cllr Paul Marshall, Leader of West Sussex County Council, said: "This is fantastic news for the whole of Sussex and West Sussex in particular. A mayoral authority will give our communities greater influence in the big decisions that affect the region, such as our highways, housing, and economic growth, plus much-needed long-term financial stability. I'm pleased the government has accepted us on to its priority programme, meaning we can



unlock these benefits sooner rather than later. There is much to do, but please be assured we will continue our focus on delivering essential services and putting the needs of our residents first."

Alongside devolution, the government is asking for proposals for unitary councils in all parts of Sussex, moving away from the two-tier model of county and borough or district councils where those exist.

The results of the devolution consultation will be assessed this spring following which a ministerial decision will be taken as to whether to proceed with a mayoral strategic authority (prior to unitary re-organisation). The national spending review will then confirm future mayoral investment funds for new mayoral areas.

MJ Cars

**Private hire for
5-8 passengers**

01903 745414
www.mjcarhire.co.uk



**Weddings
Events
Airport**

W. Bryder & Sons est. 1863

The Gables 95 Lower Street
Tillington Pulborough
GU28 9AB RH20 2BP
Tel: 01798 342174 Tel: 01798 872000

Email: wbryderandsons@hotmail.co.uk

**5TH GENERATION LOCAL FAMILY RUN
INDEPENDENT FUNERAL DIRECTORS**

24 Hours Service
Private Chapel of Rest
Monumental Stones supplied
Pre-Paid Funeral Plans available
Grave Maintenance service



These boots were made for...



Sussex Sunday Walkers

The Sussex Sunday Walkers are an independent walking group who meet every Sunday, mainly in Sussex but occasionally in neighbouring counties.

They walk between 12-16 miles, usually starting at 9am, with a lunch stop at a country pub where you can enjoy a break and a drink. Most members bring a picnic, but some choose to eat in the pub. Details of the start point, route and distance can be found at sussexsundaywalkers.org.uk under "Our Walking Diary". In addition to their regular walks, they go away for a long weekend in May and enjoy an annual social event and a Christmas lunch.

Well-behaved dogs are allowed at the discretion of the walk leader. If you would like to give it a try or need further information, please use the "Contact us" link at sussexsundaywalkers.org.uk or call Gaynor Waterman on 07986 515078. New members will be made very welcome and your taster walk is free - if you decide to become a member the annual subscription is £5.

They are getting ready to celebrate their centenary in 2026 so why not go along and give it a go.



Sussex Pathfinders Rambling Club

An independent club whose members share a common interest in walking for pleasure in the Sussex countryside, and sometimes beyond. There is normally a half day walk of 5-6 miles on Saturdays and a full day walk of 9-11 miles on Sundays. 'Figure of 8' walks are always popular with say, 5 miles in the morning, 4 miles in the afternoon or enjoy both halves of the walk. Generally members make their own arrangements for travelling to and from the meeting point. If this appeals to you, just turn up on a walk and introduce yourself to the walk leader. You should wear suitable clothing and footwear for the season. For an all day walk, bring a packed lunch, though there will often be an opportunity to get a drink at lunchtime.

Please note that dogs, other than guide dogs, are not permitted.

Visit sussexpathfinders.org.uk for full details of the club's walks and where to join them. If you need any advice, please call 07842 792962.



Willmer's
of Pulborough
Your local electrical retailer



BOSCH

Get Spring cleaning



Cordless handstick vacuum cleaners including this Bosch BBS61 with rechargeable battery

Vacuum cleaners including this compact Bosch bagged cleaner, BGBS2BA1

- Expert product advice
- Reliable service
- Full installation and set up
- Disposal of your old equipment



euronics
Superstore prices with
great local service

64 Lower Street

Pulborough RH20 2BW

01798 872866 www.willmers.com



Western Sussex Rivers Trust



Western Sussex Rivers Trust is a small team of passionate and knowledgeable people working hard to enhance and protect the precious rivers in this beautiful part of the world.

Now happily settled in their new offices based in the village of Fittleworth with the River Rother running nearby they are excited to be based in this lovely community nestled in the South Downs.

Lots of their project work is based in the local area so they are looking forward to being able to work even more closely with the local communities on projects such as the Climate Resilient Playground at Fittleworth Village School, their River Guardians initiative and of course the Rother Partnership.

If you're in the local area and would like to pop into the office to see them and chat about any of the projects they are working on then please get in touch and they will arrange a suitable time.

Visit www.wsrt.org.uk for more details of the work they are doing, how you can get involved and how you can book one of their enthusiastic and inspiring speakers to come to your event.



ANDREW GRIFFITH MP YOUR LOCAL MEMBER OF PARLIAMENT

Regular surgeries > Visits to Parliament > Supporting local events



House of Commons, London SW1A 0AA

www.AndrewGriffith.uk

andrew.griffith.mp@parliament.uk



West Sussex Library Service

This year West Sussex Library Service is celebrating 100 years of being at the heart of the community in West Sussex.

To celebrate this amazing milestone they have organised a series of events and activities for all ages to enjoy:

Library of Possibilities and Wonder

- Put on one of their Virtual Reality headsets and explore a magical world of virtual books
- View their exciting 3D posters
- Collect all the 3D virtual stickers in a hunt at your local library to complete your very own 3D world

The VR headsets will be at the following local libraries during June – contact your library for details: Billingshurst, Pulborough and Storrington.

History of West Sussex Library Service

Find out about the history of the library service through photos, official documents and memorabilia from 1925.

Centenary Reading Celebration

Share your love of books through the Centenary Reading Celebration. Each month will feature a different theme.

Library Centenary Events

A series of exciting community events will be run across the libraries. These will include murder mystery evenings, family fun days, children's activities, tea parties, talks, quizzes and author events.

Share Your Library Memories

The library service want to hear your memories and stories of library visits and what the library means to you.

Visit arena.westsussex.gov.uk/centenary for details



Billingshurst Library is located on Mill Lane, Billingshurst RH14 9JZ

Phone 01403 783145

Email: billingshurst.library@westsussex.gov.uk

Pulborough Library is located on Brooks Way, Pulborough RH20 2BP

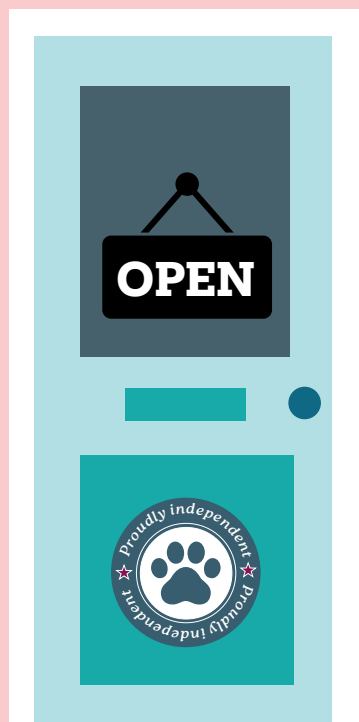
Phone 01798 872891

Email: pulborough.library@westsussex.gov.uk

Storrington Library is located on Ryecroft Lane, Storrington RH20 4PA

Phone 01903 839050

Email: storrington.library@westsussex.gov.uk



Andy
thevet
& friends

Pet care with a personal touch



Scan the code or head to andythetvet.co.uk to find out more, register and book an appointment.

Telephone: **01903 323416**

Unit 7 Robell Way, Water Lane Industrial Estate
Storrington, West Sussex RH20 3DW



Beekeeping introductory day

Wisborough Green Beekeepers Association (WGBKA) have an "Introduction to Beekeeping" day on Saturday 15th March at Rudgwick Village Hall.

The day is tailored to those who may have an interest in keeping bees, but aren't sure if it is for them or not. The day is packed with all the information needed to become a beekeeper, including the time needed, basic equipment, costs and where to site beehives. This is a popular annual event, tutored by very experienced beekeepers, has been run since 2006 and has introduced several hundred people to the craft.

For those who wish to go further, there will be free follow-up sessions at the large and well equipped WGBKA teaching apiary where you can handle bees under supervision. This provides the opportunity to learn and achieve a reasonable level of competence using someone else's facilities before buying your own bees and equipment. The course is also suitable for those who may have just started beekeeping, but have had little or no guidance.

WGBKA members live in West Sussex and South Surrey, within about 15-20 miles of Wisborough Green. If you know someone who might be interested, please let them know, or maybe you are looking for an unusual, but useful present for someone as gift vouchers are available.

Further information for beekeepers and non-beekeepers about the Introduction to Beekeeping Day and general beekeeping can be found at www.wgbka.org.uk



LET US PUT THE COMFORT BACK UNDER YOUR FEET!

We are a locally based, family-run business offering both a 'Supply & Fit' or a 'You Supply, We Fit' service for carpets & vinyl floor coverings.

With access to all the latest brands & trends to suit every budget, we bring the samples books to you so you can choose in the comfort of your own home.

Repairs & Alterations • Entrance Matting • Refits

To arrange a visit call Jon: 07595 873598 or email: info@theflooringbrothers.co.uk



ELLIOTT ENGINEERING
the independent 4x4 specialist

With Elliott Engineering, excessive bills and unsatisfactory workmanship will be a thing of the past. Over 25 years experience on Land Rover vehicles qualifies us to offer you an accomplished yet friendly and personal service with the latest range of diagnostic and remedial equipment.

We specialise in Land Rover series I, II and III Defender, Freelander, Discovery and Range Rover vehicles.

Call: 01903 892176 or mobile: 07768 725646 to see how we can be of assistance to you



Elliott Engineering
The Farm Workshop
Spring Gardens
Washington
Pulborough
West Sussex
RH20 3BS

ADVERTISER FEATURE



Alex is an award-winning garden designer based in Steyning, West Sussex.

With over 30 years' experience in garden design, horticulture and environmental consultancy, Alex gives his insight into what is in store for gardens this spring.

“Spring is probably my favourite time of year. It's great to see the garden wake up from its winter hibernation with the flowering bulbs providing blasts of colour to provide a much welcome cheer after the gloomy days of winter.

Plant of the season : Pulmonaria

If you are looking for a plant that provides great spring colour, has interesting foliage throughout the rest of the year and will self seed and propagate itself appearing in all sorts of nooks and crevices across the garden, then pulmonaria may be just the right fit for you.

Pulmonarias are most often grown for their interesting leaves, which are green with random white spots, looking as though someone liberally splashed bleach on them. The leaves also have a rough, hairy fuzz covering them. Pulmonaria prefer a semi shaded location with the flower, which can be blue, pink or white, appearing in early spring.

Pulmonaria look great in combination with the dark plum forms of helleborus orientalis and a few of the late-flowering snowdrops are also a perfect setting for them too. Other good foils include the acid greens of early euphorbias, the lime-green leaves of hemerocallis and the pretty golden grass, milium effusum 'aureum'.

Jobs to do this spring:

➡ Now is a good time to feed your plants – as your plants come out of their winter slumber a bit of extra care will help you get the best out of them this growing season.

➡ Deadheading bulbs is a traditional form of maintenance which helps to return nutrients and energy back in to the bulb for next years display.

➡ Don't forget to get on top of that weeding – if you keep up with it “little and often” it makes this tiresome job more manageable over the rest of the growing season.

➡ Spring is the best time to plant so if you are thinking of making any changes or additions then best to do before the summer while there is still plenty of moisture in the soil to help those new plants establish.

➡ Don't forget to cut back those winter stems of Dogwoods, the shrubby salvias or the stems left on the penstemon over the winter. This will help keep your plants more compact and ensure you get the best out of them over the coming years.”

AWARD WINNING GARDEN DESIGN

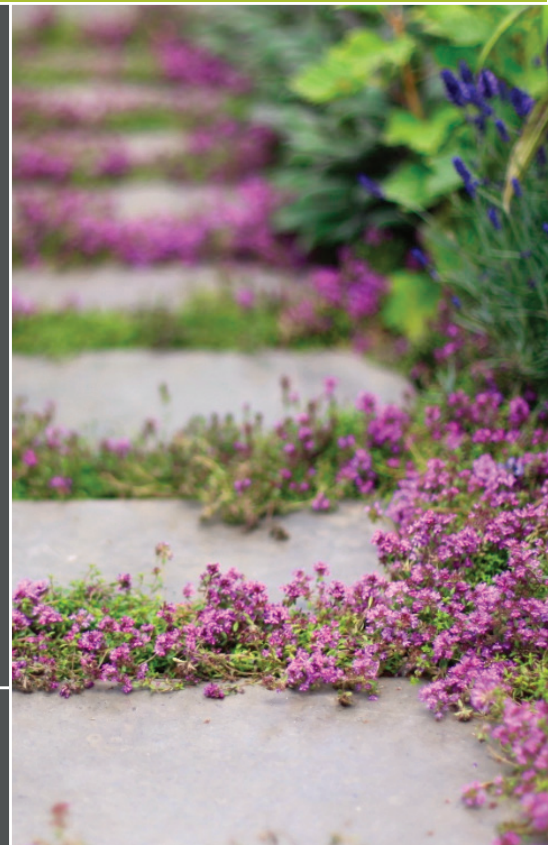
alex bell
GARDEN DESIGN

creative concepts
for traditional &
contemporary
gardens

M 07894 614575

E ballantyne@alexbellgardendesign.co.uk

alexbellgardendesign.co.uk



REDUCE

your single use plastic



REFILL REFILL REFILL REFILL REFILL REFILL



Open Tuesday-Saturday 8.30am-1pm



thegreenhouse.shop

info@thegreenhouse.shop

01798 874445

The Greenhouse at Stane Street
Stane Street Nurseries
Stane Street
Pulborough RH20 1BQ



EDUCATION

Amberley Primary School

01798 831612 | amberley.w-sussex.sch.uk

Billingshurst Primary Academy

01403 782789 | billingshurstprimary.org.uk

Bury C of E Primary School

01798 831502 | bury.w-sussex.sch.uk

St James' C.E. Primary School, Coldwaltham

01798 872196 | st-james-coldwaltham.w-sussex.sch.uk

Fittleworth C of E Village School

01798 865419 | fittleworthschool.org.uk

St Mary's CofE (Aided) Primary School, Pulborough

01798 872007 | st-marys-pulborough.w-sussex.sch.uk

Storrington Primary School

01903 742047 | storringtonprimary.co.uk

Thakeham Primary School

01903 740176 | thakehamps.co.uk

St Mary's C.E. Primary School, Washington

01903 892401 | stmaryswashington.co.uk

West Chiltington Community School

01798 813319 | westchiltschool.com

Midhurst Rother College

01730 812451 | www.mrc-academy.org

Steyning Grammar School

01903 814555 | www.sgs.uk.net

The Weald Community School and Sixth Form

01403 787200 | www.theweald.org.uk

LOCAL COUNCILS

Chichester District Council

01243 785166 | www.chichester.gov.uk

Horsham District Council

01403 215100 | www.horsham.gov.uk

West Sussex County Council

01243 777100 | www.westsussex.gov.uk

South Downs National Park Authority

01730 814810 | www.southdowns.gov.uk

Billingshurst Parish Council

01403 782555 | www.billingshurst.gov.uk

Bury Parish Council

07894 858048 | buryparishcouncil.org.uk

Coldwaltham Parish Council

01798 873747 | coldwalthampc.org.uk

Fittleworth Parish Council

07385 175198 | fittleworth-pc.org.uk

Pulborough Parish Council

01798 873532 | pulboroughparishcouncil.gov.uk

Storrington Parish Council

01903 746547 | www.storrington-pc.gov.uk/

Sutton and Barlavington Parish Council

suttonandbarlavington.co.uk/parish-council

Thakeham Parish Council

07942 181 695 | www.thakehamparish.gov.uk

Washington Parish Council

0777 6771921 | www.washingtonparish.org.uk

West Chiltington Parish Council

01798 817434 | www.wcpc.org.uk

HOW TO REPORT... FLY TIPPING

[www.horsham.gov.uk/
waste-recycling-and-bins/
fly-tipping/fly-tipping](http://www.horsham.gov.uk/waste-recycling-and-bins/fly-tipping/fly-tipping)



FIND OUT ABOUT... ROAD CLOSURES



Visit
one.network



Community groups



Storrington Flower Club meet on the fourth Wednesday of the month at 2pm for 2.30pm, except for August and December at Sullington Parish Hall, Thakeham Road, Storrington RH20 3PP.

Visitors are warmly welcomed with a cost of £6.

- March 26th Demonstrator – Helen Cukure ‘My Drinks Cabinet’.
- April 23rd AGM – members and new joining members welcome.

For more details please contact Chrissy Desmond on 01903 742102.

Thakeham Gardeners’ Club meet on the 2nd Monday of each month at Thakeham Village Hall.

Doors open at 7pm with meetings starting at 7.30pm and new members are always welcome. £4 per visit or £10 for annual membership. Each evening there is a talk followed by refreshments and general chat.

There are two plant sales each year and an annual flower show and a christmas party.

For more information contact Gil Quince, Chairman on 01798 812748.

West Chiltington Floral Club

meets at West Chiltington Village Hall, Mill Road, West Chiltington RH20 2PZ. £7.00 non members.

- Tuesday 18th March – 7.00/7.30pm Demonstrator: Nina Tucknott – ‘Fashionable Flowers’ (Free).
- Saturday 29th March – Junktique Collectables & Clutter Sale.
- Tuesday 15th April – 7.00pm for 7.30pm Speaker: Robin Ramsey – ‘Growing Dahlias the Withypitts Way’.
- Tuesday 20th May – 7.00pm Club Workshop with Graham King.

All bookings and further details call Carol on 01798 813608;

Brenda on 01798 813712 or email wchiltfloralclub@gmail.com

Arun Valley u3a is an informal learning and social co-operative based around Pulborough and Storrington open to anyone who is no longer in full-time employment.

With over 200 members and around 30 interest groups ranging from art appreciation to table tennis, they have something for everyone, and membership is only £10 per year.

To find out more, head along to Pulborough Village Hall on Friday 25th April 10.30am-12.00pm for a coffee and to meet some of the members.

Or visit arunvalley.u3a.org.uk or email barbwuzav@gmail.com

West Chiltington WI meet on

the 2nd Thursday of each month (excluding August) at West Chiltington Village Hall. **For further information westchiltingtonwi.com**

Hugh Tanton
GARDEN DESIGN

**Garden Design & Landscaping Solutions
From a Qualified Professional**

Garden Design
Border Rejuvenation
Planting Plans
Solutions to Problem Areas
Planting and Landscaping
Friendly Advice and New Ideas

T: 01403 713 714 M: 07502 277 911
E: enquiries@hughtantongardendesign.co.uk

To find out more please visit
HughTantonGardenDesign.co.uk

ACCREDITED PARTNER
Wichitower Turf

The Gardeners Guild
REGISTERED MEMBER

Chartered Institute of Horticulture

The Association of Professional Landscapers
Garden Designer

hedgerow
MAGAZINE

If you have a community group or event you would like listed in a future issue of Hedgerow Magazine then please send details to:
editor@hedgerowmagazine.co.uk

**Copy deadline for Summer edition
2 May**



Sports + fitness



Chanctonbury Badminton Club

LOCATION: Storrington Leisure Centre
TIMES: Club nights on Wednesday between 8pm and 10pm with matches played on Mondays.
CONTACT: Michael Murray at mikemurray53@btinternet.com or call 0793 2175797. Facebook @ [chanctonburybadmintonclub](https://www.facebook.com/chanctonburybadmintonclub)

West Chiltington Badminton Club

LOCATION: West Chiltington Village Hall
TIMES: Sundays from 11am until 1pm.
CONTACT: Vivian Jones on 01798 813550 or e-mail vmjones18@hotmail.co.uk

Storrington Lawn Bowling Club

LOCATION: near Wholesome Warehouse on West Street
TIMES: Various
CONTACT: Barbara on 01798 813740 or 07709 265359, or www.storringtonbc.co.uk

Sutton Lawn Bowls Club

LOCATION: behind the church in Sutton RH20 1PS
TIMES: Roll up sessions three nights a week and afternoons by arrangement.
CONTACT: www.suttonbowlsclub.co.uk or Sue Dudman 07796 851441

West Chiltington Croquet Club

LOCATION: West Chiltington Croquet Club, Mill Road, West Chiltington, West Sussex, RH20 2PZ
TIMES: Four times per week
CONTACT: westchiltingtoncroquet.com

Keep Fit For Seniors

LOCATION: Ashington Community Centre
TIMES: every Thursday, between 1.30 and 2.30pm. £5 per session.
CONTACT: Diana on 07824 159642

Thakeham Short Mat Bowls Club

LOCATION: Thakeham Village Hall
TIMES: Monday evenings from 6.45-8.45pm
CONTACT: Barbara on 07539 850848.

West Chiltington Short Mat Bowls Club

LOCATION: West Chiltington Village Hall
TIMES: Mondays 2-4pm, Thursdays 9-11am and Thursdays 11am-1pm
CONTACT: Jean Palmer on 01798 815930

Thakeham Table Tennis Club

LOCATION: Thakeham Village Hall
TIMES: Various
CONTACT: thakehamtabletennis.co.uk

West Chiltington Table Tennis Club

LOCATION: West Chiltington Village Hall
TIMES: Various throughout the week
CONTACT: Secretary, Iain, on 01403 731341 or email westchilt.tabletennis@hotmail.co.uk

If you have a sports club in the Hedgerow area that you would like listed in a future issue of Hedgerow Magazine then please send details to: editor@hedgerowmagazine.co.uk
Copy deadline for Summer edition: 2 May







[HEALTH]
PODCAST
hayleypalmer.co.uk/podcast/



**STORRINGTON'S
BIGGEST AND
BEST REVIEWED
GARAGE!**



Based in Storrington and with over 20 years experience in the motor industry, Sivtech Garage is an independent garage offering car servicing, repairs, diagnostics and MOT testing to all makes of petrol, diesel and hybrid vehicles

-  MOT testing
-  Class 4 and Class 7
-  Servicing
-  Diagnostics
-  Tyres
-  Brakes

Checkatrade.com
Where reputation matters

**BOOKMY
GARAGE**



GARAGE VEHICLE REPAIR & MAINTENANCE

01903 744111

sivtechgarage.co.uk

Cootham Lea Workshop
Pulborough Road
Storrington
RH20 4HP